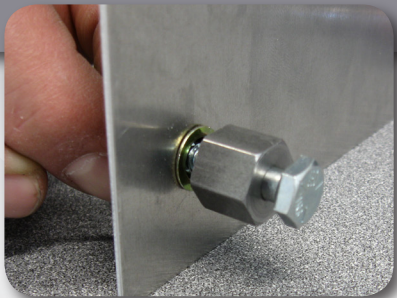
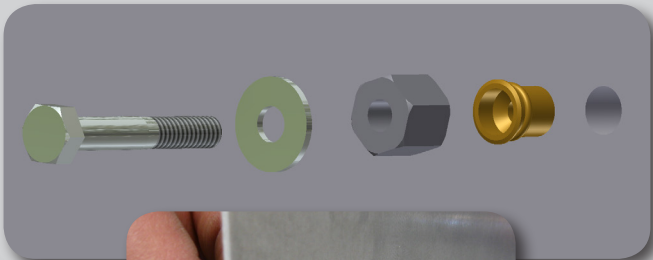


NUT INSERT INSTALLATION STEPS:

6. Slide hex tooling compression nut on to hex bolt 1/4 - 20 X 1-1/2" zinc. Make sure tooling compression nut raised machined lip is away from hex bolt head



7. Thread nut insert on to hex bolt - tooling compression nut assembly. Nut insert flange should contact machined lip on tooling compression nut.

8. Nut insert should be thread completely on to hex bolt / tooling compression nut assembly.

9. Insert nut insert / tooling compression nut / hex bolt assembly into pre-drilled hole in wall.

10. Using open end wrenches or ratchet socket, hold tooling compression nut with open end wrench and tighten the hex bolt to compress nut insert.

11. Do not over tighten nut insert. Nut insert should be compressed to hold in wall.

12. Unthread hex bolt and tooling compression nut from installed nut insert.

13. Use hex bolt and tooling compression nut for installation of remaining nut inserts.



WE BUILD IT BETTER



*7501 Commerce Dr
Weston, WI 54476*

715.355.8842

CopBox ONLY FROM CTECH
CABINETS TACTICAL STORAGE

*Dodge Durango
INSTALLATION GUIDE*



TACTICAL

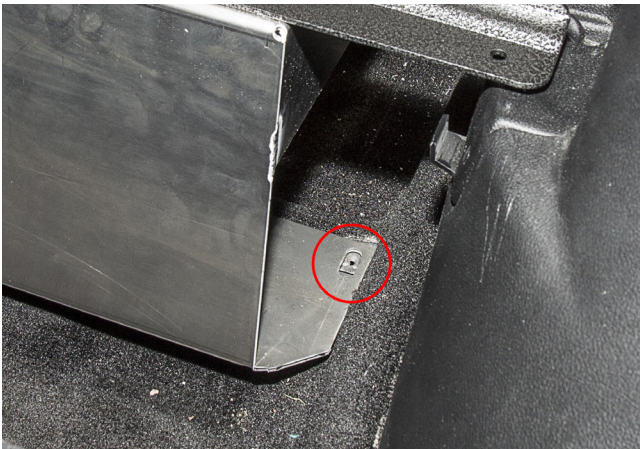
DURANGO INSTALLATION STEPS:

1. Remove rear sill plate, rear floor panels, and luggage D Rings. (not pictured)

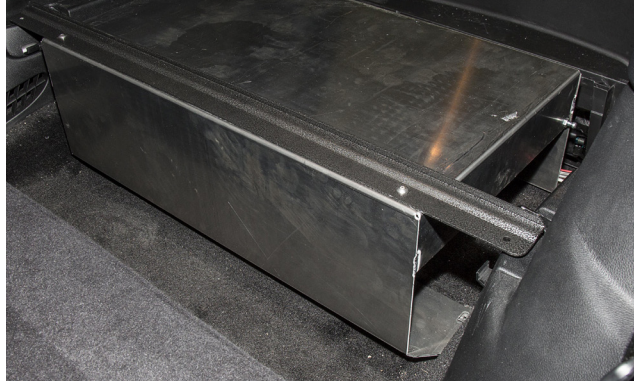
2. Install rear mount bracket, using original factory mounting hardware.



3. Remove factory clip from storage container in floor and replace with supplied nut insert. Please see nut insert procedure for installation instructions. (mount panel will not be installed at this point)



4. Install front mounting bracket with supplied hardware into the nut inserts and Mopar supplied hardware for the 4 seat studs towards the passenger compartment.



5. Connect gas shock assist to the rear mounting bracket ball studs. Shaft end of gas shock should be towards the rear bracket.



6. Set CopBox Cabinet into vehicle and slide QuickLink front lip on the CopBox Cabinet into the Z Rail on the front bracket.



6. Attach gas shocks to bottom ball studs on the CopBox Cabinet.



6. Set CopBox Cabinet down and insert CTech knobs to secure rear of CopBox Cabinet.