



COMMANDER SERIES COPBOX CABINET



DRAGE SOLUTIONS • THE MOST RESPECTED NAME IN MOBILE ALUMINUM STORAGE SOLUTIONS • THE MOST RESPECTED

ONLY FROM CTECH

CopBox

CABINETS TACTICAL STORAGE®

full size suv: **C45-401**

COMMAND Characteristics 26" Tall

The SUV Cabinet designed to maximize your cargo space in a full sized SUV cargo area. Shown with Haenni scales in the door opening but can easily store any other gear. This cabinet features long gun storage, special vented electronics drawer and the Gear Guard with inverted top tray.

- Mobile Command Station in your SUV
- Long gun storage with dog house extension
- Scale storage shelving
- Vented Electronics drawer
- Inverted Top offers quick access to gear

ELECTRONIC DRAWER

LONG GUN
-dog house

INVERTED TOP
GEAR GUARD



DESIGNED, MANUFACTURED & ASSEMBLED
IN THE U.S.A.

ONLY FROM CTECH

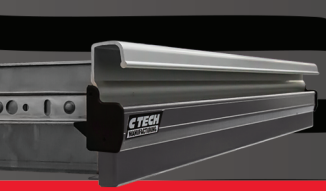
MotionLatch™

Drawer & Door System

US Patent 6,547,289

226 lbs
WEIGHT

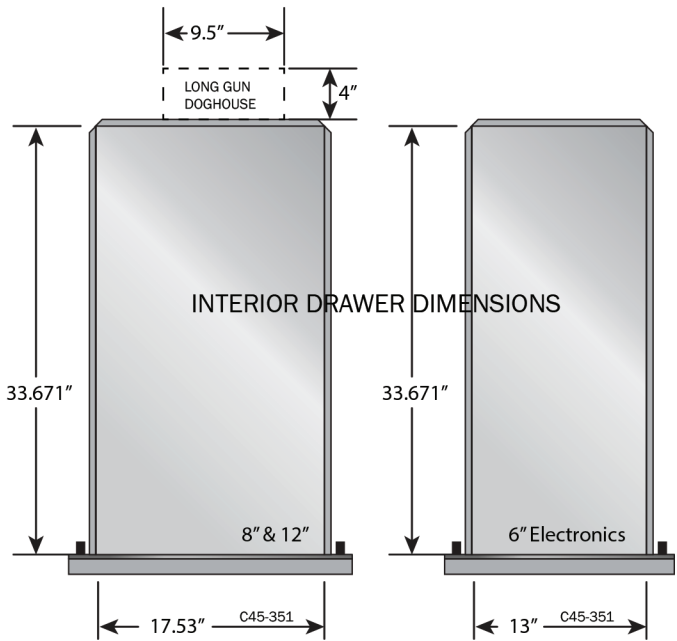
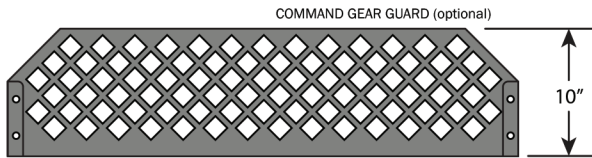
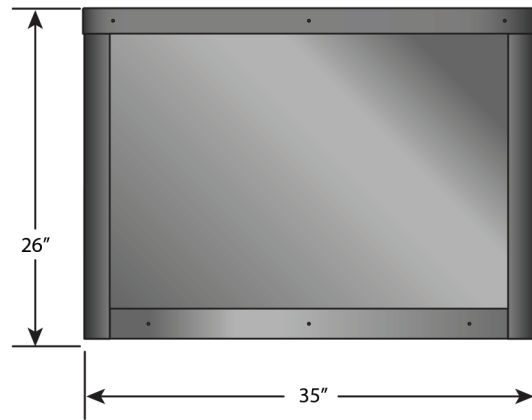
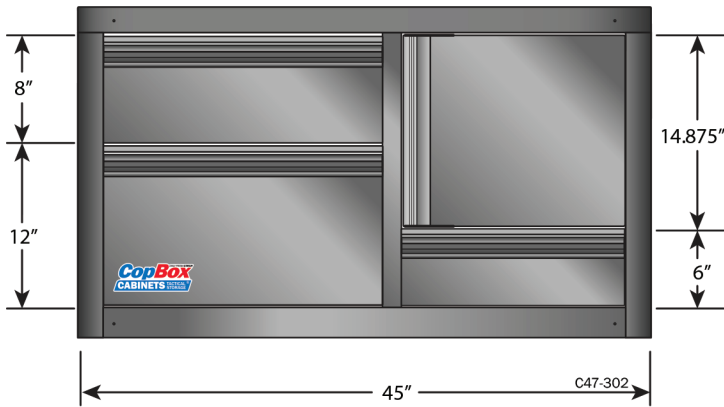
112016



COMMANDER SERIES COPBOX CABINET



DRAGE SOLUTIONS • THE MOST RESPECTED NAME IN MOBILE ALUMINUM STORAGE SOLUTIONS • THE MOST RESPECTED



ONLY FROM **CTECH**

CopBox

CABINETS TACTICAL STORAGE®

STANDARD FEATURES:

- Lightweight All Aluminum Construction
- MotionLatch™ Doors and Drawers
- Extruded Aluminum Radius Corners
- Tough Powder Coat Finish

LIFETIME WARRANTY

- Drawer Liner
- Drawer / Door /locks
- Front to Back Drawer Dividers



Proprietary Notice

This drawing and the text, design, and concepts herein are the property of CTECH Trailer Cabinets, a division of Greenheck Racing. Any reproduction, distribution, or forwarding of this document to persons or organizations for any reason without written permission from CTECH is prohibited.